



## KARTSPORT NEW ZEALAND MANUAL

### SECTION G - EQUIPMENT AND RESPONSIBILITY

Issue 2018-2 published and effective 10-4-18

#### G EQUIPMENT AND RESPONSIBILITY

##### G1 RESPONSIBILITY

**G1.1 INDEMNITY:** Every competitor and parent/legal guardian (if competitor is under 18 years) whether in practice or competition must sign an indemnity form (which will be supplied by the promoting organisation) before racing. A parent/legal guardian signing on behalf of a minor must be in attendance at all times during the course of the days competition including drivers' briefing. This will in effect indemnify the promoting organisation and affiliates of any responsibility to the competitor or equipment. A completely legal indemnity form must name as indemnified; The CIK-FIA, the MSNZ, KartSport New Zealand and all affiliates, the owner or lessee of the property on which the event is held, the promoting Club and all assistants, helpers, officers, employees and members of any of the forenamed organisations. The indemnity form must then be signed by a witness of the promoting organisation conducting the event.

**G1.2 CHANGE OF GUARDIAN:** Should a minor's parent or legal guardian not be able to attend the event or need to leave an event before it is completed, the parent/legal guardian and the stand in guardian must complete the Change of Guardian Indemnity Form.

**G1.3 IT IS THE COMPETITORS RESPONSIBILITY TO:** Be fully conversant with all the Regulations, Codes, Rules, Procedures and Specifications governing kart competition. To obey the lawful instructions of a responsible Official and comply with all rules regarding behaviour (Rules C3.1, G1.8, G1.9).

When requested by the Technical Officers or Machine Examiners present your kart in a clean and race ready condition for inspection.

If required include extra engines and tyres, etc.

**Fast Track Club Day Scrutineering** - When requested present your kart for a scrutineering recheck.

When requested by the Stewards or Race Officials, present your competition licence and proof of current affiliated Club membership for inspection along with your race suit, crash helmet, gloves and race footwear.

Ensure that an entry form is completed in full and is correct in detail.

Confirm your entry with the Event Organiser when required.

KartSport New Zealand Stewards, Race Officials and Technical Officers reserve the right to call any competitor, at any time during an event, to present his/her kart, personal racing safety apparel and competition licence to the Officials.

Be fully acquainted with the race programme including race timings where applicable.

When required be present with your kart on the out grid ready to compete.

To ensure that all bar coded seals are applied to the engine, chassis and any other controlled items as required by the Technical Officers or the Supplementary Rules of the event.

It is the competitor's responsibility to ensure these bar coded seals are fitted correctly, remain legible, undamaged and fitted at all times during the event.

Once issued by the Technical Officers these seals must be fitted by the competitor prior to entering the controlled Out Grid area either before their first Heat or the first time they present their kart for Qualifying depending on the event format. Or fitted at a time and place as stated in the Supplementary Rules or as instructed by a Technical Officer. Karts must be presented immediately to the bar code scanning area to have these bar codes recorded before entering the Out Grid. Bar code scanning may commence before or as soon as the last kart has left the Out Grid from the previous race. The scanning of these components may also take place before exiting the scales area or any other designated area.

Ensure that all sealing/markings as required to the engine including any other controlled items and tyres is/are applied before leaving the scales/secure area where such sealing/markings is being carried out.

Leave your pit area clean and tidy.

Should a competitor have a medical condition, it is the competitor's responsibility to report, prior to competition, this condition to the event First Aid personnel (Rule Q6).

**G1.4 DRIVERS BRIEFING:** Attendance at Drivers Briefing is compulsory for all competitors and the nominated parent/guardian of minors. Competitors and parents/guardians must follow all verbal instructions issued by Race Officials and Technical Officers at Drivers Briefing. Such instructions carry the same status as any Supplementary Rules issued at the event.

**G1.5 SCRUTINEERING, GEAR CHECK and DOCUMENTATION:** When required, present your kart to the Machine Examiners in a clean and race ready condition and when applicable extra engines and tyres. Present to the Race Officials race suit, helmet, gloves, race footwear, current Competition Licence including proof of current Club membership.

KartSport New Zealand Race Officials and/or Technical Officers reserve the right to call any competitor at any time during the event to present his/her kart, racing apparel and Competition Licence to the Officials.

Any non compliance with the Rules or Specifications may incur penalties.

**G1.6 FINES:** Fines shall be paid within 48 hours of notification. Any delay in making payment will result in suspension and/or any other penalties being imposed. The payment can be made to the issuing official on the day, or, sent directly to the KartSport New Zealand National Steward.

**G1.7 NEW COMPETITORS:** Must display a large black cross 'X' only (no race number) on their rear number plate (adhesive tape is acceptable) until a KartSport New Zealand Grade 1, 2 or 3 Race Official has given permission to remove it as per Rule D3.1.1

**G1.8 PIT CREW AND MECHANICS** will be held to be the responsibility of the competitor for their actions.

**G1.9 UNACCEPTABLE BEHAVIOUR:** Physical or verbal abuse by an official or competitor of any kind will not be tolerated whether directed at a fellow competitor or official. Any behaviour at a race meeting which in the eyes of the organisers or KartSport New Zealand is detrimental to the image of karting as a sport will not be tolerated. Any breach of this rule during practice or competition can result in an Exclusion and any further penalties that may be imposed. The definition of 'practice' or 'competition' shall mean from the time the gates open at the track to the completion of the respective on-site or off-site prize giving.

**G1.10 ACCESS TO RACING CONFINES:**

No person other than a driver or, in the case of a person under 18 years, his/her parent/legal guardian is permitted inside the racing confines unless:

- specifically requested by a KartSport New Zealand Official
- he/she is on official business
- he/she is providing outside assistance as allowed for under class rules. (Rule J1.6).

- G1.11 SMOKING/NAKED FLAMES:** Smoking and naked flames are not permitted in the designated pits or extended pit area, the dummy grid, pit shute or technical inspection areas. It is recommended that Clubs establish “smoking permitted areas. gas welding areas and Gas BBQ/cooking permitted areas”.
- G1.12 ACCIDENTS:** Any kart involved in an accident may be requested by the Officials to be presented to the scrutineer before returning to the track. Injuries sustained requiring doctor or hospital treatment **MUST** be reported to the Chief Steward.
- G1.13 IN THE EVENT OF AN INCIDENT** which may impede your ability to operate a kart and which requires referral to a hospital, medical centre or GP, a medical clearance to race must be produced, signed and stamped by a registered medical practitioner under notes in KartSport New Zealand Licence Book. Failure to declare the incident and provide clearance may result in licence suspension.
- G1.14 LONG HAIR:** At all times when operating a kart, long hair must be retained within protective apparel.
- (a) Competitors may use a hair net, hood, balaclava or other device to retain hair.
  - (b) Extremely long hair must be retained within the hood, balaclava and driving suit and not tucked under the helmet, in order to compromise the helmet’s performance in the event of an impact.
- G1.15 ALL COMPETITORS AND PIT CREW** must take into account the potential danger of karts being operated on stands in the pit area. Karts with engines running must not be moved around the pit area or dummy grid. Extreme care must be taken at all times to protect eyes, hands, hair, etc through the use of appropriate equipment and actions.
- G1.16 CREW FOOTWEAR:** Any person within the racing confines, the in grid and the out grid must comply with the minimum regulations for footwear, which must be worn. Footwear must be enclosed from heel to toe, either laced, strapped or elasticised. The wearing of jandals (thongs) or open sandals is not permitted.
- G1.17 REVING KART ENGINES:** For all events affiliated Clubs will designate an area or areas for the revving of kart engines. This/these areas will be placed in an appropriate area away from the main pit area where other competitors are pitting and away from the general public. Competitors will be required to follow instructions from the host Club regarding revving engines in these designated areas. Failure to follow these instructions may result in exclusion from the meeting.

## **G2 RACING HELMET & STANDARDS**

- G2.1 RACING HELMET:** Racing helmet will only be a full face helmet with a properly fitted visor snapped shut and must be worn at all times when operating a kart. The helmet must be properly fitted and securely fastened. Helmets which can have any structural part detached or lifted (other than the visor) are not permitted. Helmets with built in rear view capability are not permitted. Only approved helmets are permitted and these must be maintained in A1 order.

An approved helmet must bear one of the listed approved standards.

For each calendar year racing helmets which comply with the standards as laid out below and which are in good condition and are less than 10 years old (as defined in G2.5), will receive a tamper proof year dated KartSport New Zealand sticker.



This sticker will be placed on the outside back of the helmet by a KartSport New Zealand Race Official. If the racing helmet is involved in an incident and sustains damage, which in the opinion of a Race Official makes it non compliant, or its condition deteriorates during the calendar year of the sticker, a KartSport New Zealand Race Official will remove the sticker.

Competitors must wear a helmet at all times when within the racing confines including while waiting for a race, time trial or practice to be concluded and while riding on a recovery vehicle/trailer. The only exceptions are when the helmet needs to be removed under the supervision of medical personal or the competitor is standing in a designated safe area, eg Flag Point.

## **G2.2 MINIMUM RACING HELMET STANDARDS APPROVED FOR KARTING COMPETITION IN NEW ZEALAND**

### **Europe: ECE 22-05, ECE R 22-05 or ECE 22-05 R**

The only labelling on some helmets maybe E3 in a circle. The E is the homologation mark for ECE 22, the number following (1-16) represents the country granting the homologation. Either above or below the circle will be a series of numbers. The first two figures should be 05 immediately followed by production numbers. The date of manufacture can sometimes be found on the back of the helmet, inside lining, polystyrene shell or strap. The date of manufacture must be able to be viewed on or in the helmet.

### **Great Britain: BSI 6658-85 Type A or BSI 6658-85 Type A/FR**

The date of manufacture must be able to be viewed on or in the helmet.

### **Australia: AS1698**

A date of manufacture must be able to be viewed on the AS label or on the back of the helmet. Some AS1698 approved helmets may also have Snell, ECE or BSI approval labels.

### **U.S.A.: K2005, M2000, M2005, M2010, SA2000, SA2005, K2010, SAH2010**

#### **Child's helmet: Snell-FIA CMH (Snell-FIA CMS2007 & CMR2007)**

The date of manufacture must be able to be viewed on or in the helmet.

Helmets with only the DOT standard will not be acceptable.

#### **SFI 31.1A or SFI 31.2A**

The specification must have the A. The date of manufacture must be able to be viewed on or in the helmet.

### **FIA FIA Standard 8860-2004 and FIA 8860-210 (FRA)**

**Note:** A Helmet with correct standard number but which was manufactured more than 10 years ago will not be acceptable. ie. a Snell K2005 sticker with a manufactured date of January 2005.

## **G2.3 HELMETS PERMITTED FOR INTERNATIONAL KARTING COMPETITION**

### **FIA: FIA Standard 8860-2004 and FIA 8860-210 (FRA)**

### **U.S.A.: SNELL K2005, SA2005, K2010, SA2010 and SAH2010 (USA).**

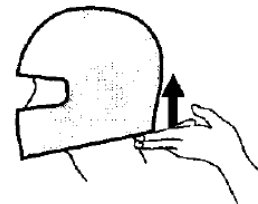
#### **SFI 31.1A and SFI 31.2A**

#### **Child's helmet: Snell-FIA CMH (Snell-FIA CMS2007, CMR2007, CMS2016 and CMR2016)**

(compulsory for children under 15 years of age)



- G2.4** It is the competitor's responsibility to prove the quality of the helmet. It is not necessary for a Machine Examiner or the Chief Steward to prove the standard or quality of an unidentified helmet.
- G2.5** Age will be determined by the manufacturer's date of manufacture labelling. Where no date of manufacture is visible on the helmet the onus is on the competitor to prove the helmet is less than 10 years old. Date of purchase is not evidence of the age of the helmet. No KartSport New Zealand tamper proof year dated sticker will be applied for a calendar year to any helmet which is more than 10 years old.
- G2.6** The Chief Steward is empowered to impound any helmet considered of insufficient standard or, if of approved design, in a damaged or unsound condition.
- G2.7** Only helmets with a strap retaining system are permitted.
- G2.8** Helmets are not to be modified, except as specifically permitted by the helmet manufacturer, in particular;
- (a) ABS and Polycarbonate helmets must not be painted.
  - (b) It is not permissible to put any stickers on ABS or Polycarbonate helmets other than those supplied by the helmet manufacturer.
  - (c) Composite shell helmets may only be painted with a paint approved by the manufacturer.
- G2.9 HELMET FIT TEST:** The helmet with strap correctly fastened must not be able to be removed by lifting the back of the helmet. See drawing.
- G2.10** The use of helmet restraints securing a competitor's helmet to the kart are not permitted.
- G2.11 HELMET VISORS:** These must be properly fitted to give complete eye protection at all times. Visors must be correctly fitted. Any foreign attachment to the visor to hold it in place is not acceptable. Visors which change colours (ie Blue Blockers) are not acceptable. Only clear visors can be used when competing at events under lights. When using a wet weather whirly a properly fitted visor must be used as well. All visors must be clean and free of scratches and marks. Any attachment to the visor must not be lower than eye level when worn.
- The Chief Steward is empowered to impound any helmet visor considered of insufficient standard or clarity, damaged or unsound condition.
- Protective film or tear offs are permitted on visors but must not be removed or discarded whilst the competitor is within Sprint Circuit racing confines.
- G2.12 CAMERA:** It is not permitted to attach a camera to a helmet except as specifically permitted by the helmet manufacturer. Such helmet camera must be wireless. (ie not connected to the kart and/or recording device via cable). Helmet, with camera mounted, must be inspected and approved by the Chief Steward before use.
- Except for a helmet camera as noted above, the carrying of a camera or associated equipment on a driver's person is prohibited.



**G2.13 NECK BRACES:** The wearing of neck braces for drivers of situp karts is strongly recommended.

**G3 CLOTHING & STANDARDS**

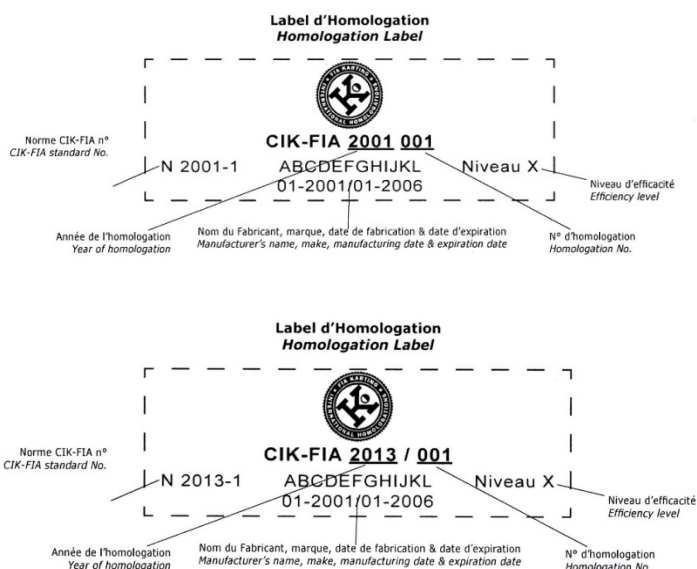
**G3.1 IDENTIFICATION:** All competitors, irrespective of age, are to have some means of ready identification (first and last name, eg. Bruce Bayliss) stitched or screened on the exterior of their racing overalls and wet racing clothing. Options:

- on the outside left or right breast of the overalls.
- on the outside of the overalls belt.

**G3.2 CLOTHING:** Race suits must be worn. Race suits must cover the whole body from neck to ankles, including arms, and be adequately secured at the neck, wrists and ankles. Race suits other than leather must be lined with cotton, polycotton or brushed cotton which must be attached to all garment seams. Boiler type race suits with pop type buttons are unacceptable. Race suits must have adequate and operable fastenings and be in sound condition free of tears, damage and excessive wear. The Chief Steward's decision regarding the acceptability or otherwise of race suits and other clothing will be final.

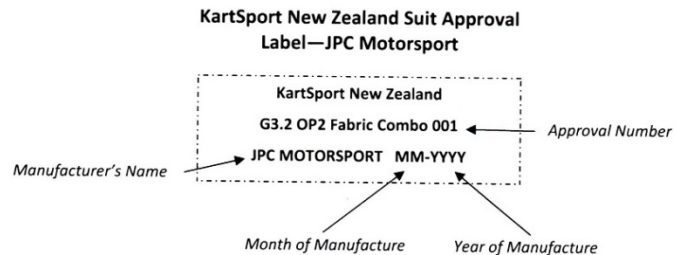
**The following options are permitted:**

**Option 1** One piece fabric race suits homologated by the CIK-FIA to CIK Standard N2001-1 or N2013-1 with an efficiency level of either Level 1 or Level 2. The CIK-FIA homologation label (see sample below) is on the back of the collar normally embroidered on to the outer fabric layer only. For KartSport New Zealand sanctioned events, race suits homologated by the CIK-FIA have no expiry date.



### Option 2

One piece fabric race suits produced using an outer/inner fabric combination which meets CIK-FIA Homologation Regulation Article 8.11. Such race suits must have a KartSport New Zealand Approval Code Label (see sample below) embroidered on to the outer fabric layer only and positioned on the back of the collar.



### Option 3

One or two piece leather race suits complying with the standards defined by the FIM. (1.2mm thickness) If two piece the two pieces must be securely and fully fastened together by an appropriate zip. Leather race suits are strongly recommended for SuperKart classes.

#### **NOTE: for CIK-FIA International Competition:**

Only Overalls approved according to CIK-FIA Standard No. 2013-1, which are listed in "[Homologated Overalls – Part 1](#)", will be accepted as from 01.01.2017.

**Wet Weather Over-suit:** A wet weather over-suit or other water resistant clothing or any other clothing may be worn over the race suit. Such wet weather over-suit/clothing must be adequately secured at the neck, ankles and wrists and must not have any protrusions. Provided the wet weather over-suit is transparent and the name on the race suit (re Rule G3.1) can be seen clearly underneath, no additional marking is required as per Rule G3.1. Otherwise a suitable permanent marking of the name as per Rule G3.1 on the wet weather over-suit/clothing, that won't degrade during the event, is required.

**G3.3 GLOVES:** These must be of substantial material, eg. leather or vinyl etc, give complete hand and finger protection, be firm fitting and worn during practice and competition.

**NOTE:** Vinyl must be lined and must not be in direct contact with the skin.

**G3.4 FOOTWEAR:** Suitable footwear of enclosed type giving full foot protection. Laced type with ankle protection preferred.

### **G4 SIGNAGE:**

**G4.1** When required, the following areas are to be allocated to signage supplied by KartSport New Zealand and/or promoting Club/Management.

**G4.2 NOSE CONE:** A maximum area of 300 mm wide x 110 mm high in the centre of the upper surface of the nose cone. Signage must be made of adhesive vinyl material.

**G4.3 FRONT CONSOLE:** A maximum area of 200 mm wide x 40 mm high immediately above the front number plate. Signage must be made of adhesive vinyl material.

Priority use of the Nose Cone and the Front Console will be in the order:

- KartSport New Zealand
- Organising Club/Management
- Competitor

**G4.4** When required, the following areas are to be allocated to signage supplied by KartSport New Zealand only.

- G4.5 DRIVER'S RACE SUIT:** A maximum area of 100 mm x 100 mm on the driver's chest on the side opposite his/her name. Signage patch must be made from colourfast materials and be either embroidered or screen printed on suitable fabric.
- G4.6 DRIVER'S HELMET VISOR:** A full width helmet visor strip with a maximum height of 30 mm. To be placed across the top of the visor only. Dispensation to not use a visor strip may be given by the Chief Steward if it can be demonstrated that the visor strip impairs vision. (eg helmets with very narrow apertures). Visor strip must be made from adhesive vinyl material.
- Members of KartSport Dunedin and KartSport Southland must display the **General Tyres Ltd** visor strip. Members of all other Clubs must display the **Carters Tyre Service** visor strip (see below).



- G4.7 EVENT SPONSOR SIGNAGE:** An event sponsor signage decal (30mm x 200mm maximum) may be required by the event Supplementary Rules. If required, this decal can either be placed immediately below the number plate area on the front nasau panel or immediately above or below the area defined in Rule G4.2 (nose cone). Decals must be in place at scrutineering and remain in place for the duration of the event. Decals must be available from the Club prior to scrutineering and be made of adhesive vinyl material.