



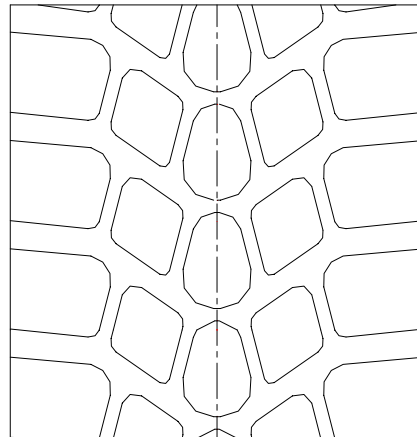
Tyre Specifications

Manufacturer	SUMITOMO RUBBER INDUSTRIES,LTD.
Model / Type	DUNLOP RACING SLW2
Number of Pages	4 page(s)
Other	

Specification sheets are attached hereto.



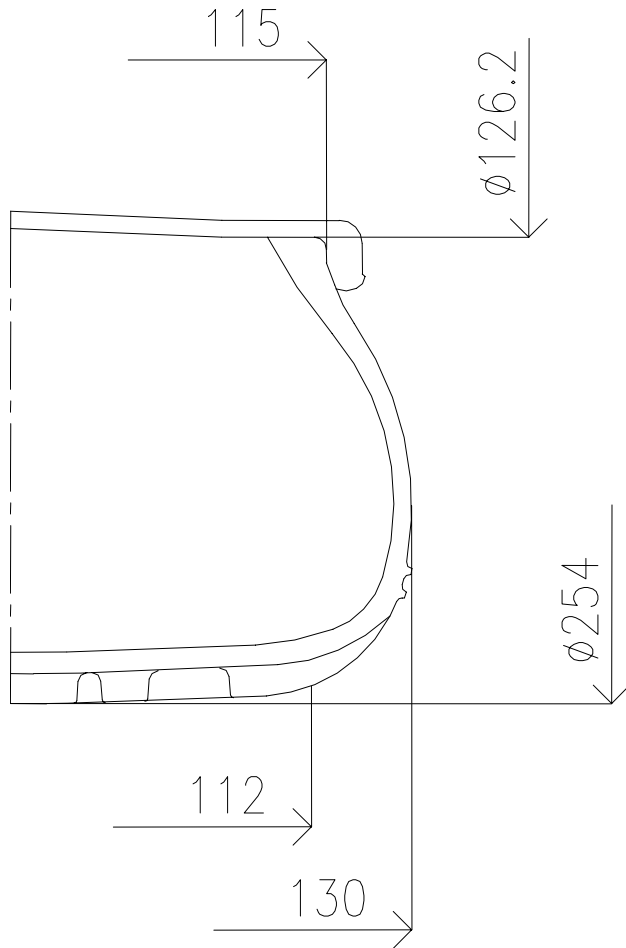
PHOTO OF TYRE



TREAD DESIGN DRAWING

TECHNICAL INFORMATION	FACTS	REMARKS/ QUALIFICATIONS/ NOTATIONS
Dimensions	10 X 4.50-5	
“Cold” Testing Pressure on wet track	1.5 bar	
“Cold” Testing Pressure on dry track	0.7 bar	
Normal Service Pressure	1.5 bar	±0.7 bar
Depth of tread	5.4 mm	±0.3 mm
Weight	1.20 kilos	±0.5 kilos
Number of ply	2	
Carcass material	Nylon	
Angle of tyre canvas	25°	±5°
Canvas Thread Type(ISO)	940 dtex	
Superficial Tread Hardness(ISO48/94)	38.5 Shore	±7 Shore
Number of wear indicators	—	
Maximum inflation pressure	3.9 bar	—
Maximum Load capacity	600N	
Maximum Speed Rating	170km/H	

Drawing of tyre cross section and optimum rim dimensions.



Tolerances	
130	± 5
112	± 3
254	± 7
126.2	-1.0
115	± 1

Remarks

Photos and Incriptions		Only inscriptions, which do not change during production, are mentioned.		
Photo of side wall - OUTSIDE		Inscriptions on sidewall - OUTSIDE		
		Text	Height	Stroke
		10X4.50-5	10mm	3mm
		KT12	6mm	3mm
		TUBELESS	4mm	0.7mm
		SLW2	6mm	2mm
		 **	12mm	—
		DUNLOP **	12mm	3mm
			4mm	1mm
			6mm	—
		Remarks: ** yellow mark		
Photo of side wall - INSIDE		Inscriptions on sidewall - INSIDE		
		Text	Height	Stroke
		10X4.50-5	10mm	3mm
		KT12	6mm	3mm
		TUBELESS	4mm	0.7mm
			20mm	—
		DUNLOP	12mm	3mm
		KART RACING	4mm	0.7mm
		MADE IN JAPAN	4mm	0.7mm
		WARNING NEVER INFLATE ABOVE 4.0KG/CM ²	4mm	0.5mm
		FOR RACING PURPOSE ONLY	4mm	0.7mm
			6mm	—